

SCOLARI

PROGETTAZIONI



INGEGNERIA ARCHITETTURA

Scolari Progettazioni srl is a specialized consulting team of designers experienced in structural and civil engineering. We have hands on the design of steel, concrete, masonry and timber structures for industrial and civil constructions. In our history we designed various structural systems such as buildings, bridges, canopies, structures for power plants, foundry plants canopies, commercial buildings, sport facilities, roads, car parks, and others. Our staff is based on engineers, architects and consultant with many years of experience which leads to high quality and long lasting design solutions to a wide range of engineering and architectural requests. We also have long lasting relationships with relevant engineering company of the area (Arup Italia Srl, Paul Wurth Spa, Danieli Spa, CREW Cremonesi Workshop Srl, Savelli Spa, A2A, Somin Srl)

Our office also achieved a consistent experience in the design of seismic resisting structures and evaluation of existing structures with respect to their seismic vulnerability.

Finite Elements and Frame by Macro Elements software (Straus7, Midas, 3Muri) are used together with solid modelers (Tekla, Advance Steel, Prostructures) for optimizing the design and analyzing the erection stages.

Our structures were built in Italy, but also in foreign countries such as United States, Saudi Arabia, Algeria, Brazil, France, Romania, South Korea, Qatar, Albania.

Staff

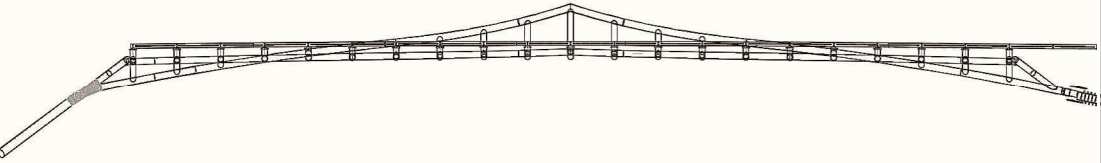
Ing. Paolo Scolari
Ing. Pietro Scolari
Ing. Guido Mori
Arch. Enrica Scolari
Ing. Alessandro Belli
Ing. Giorgio Avanzini
Ing. Valentina Vurro
Ing. Michelangelo Gaggia



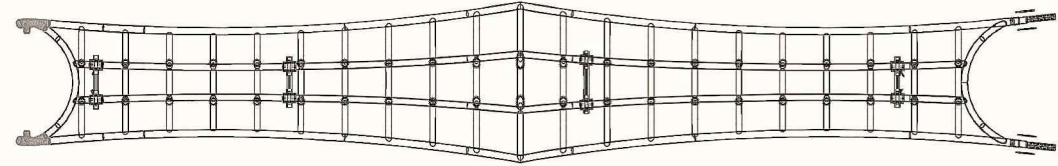
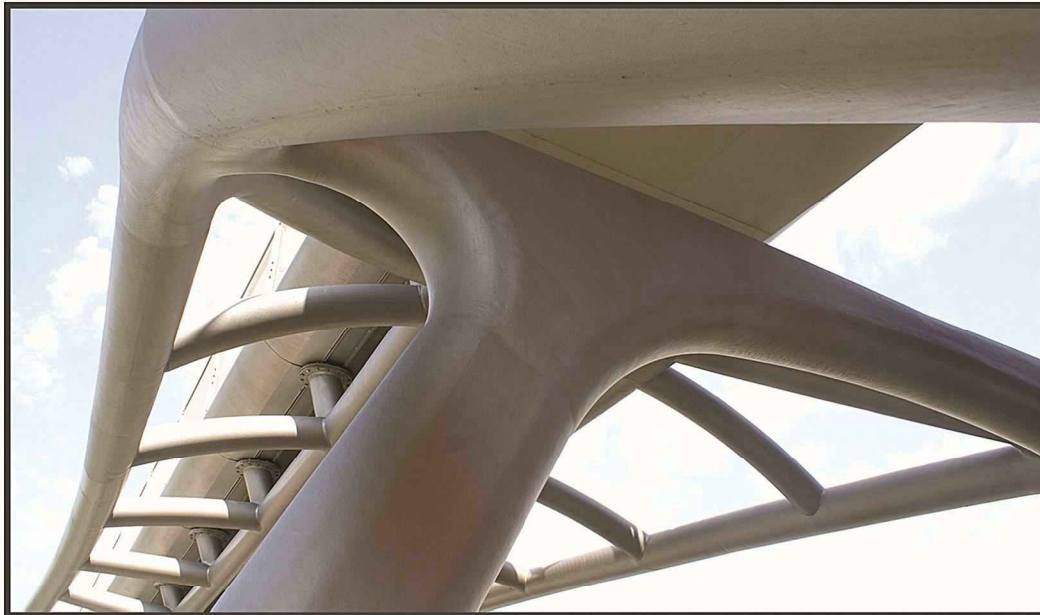
2008: Steel buildings and structures for two new ANSALDO ENERGIA power plants in San Severo, Puglia and Bayet, France, with CREW Cremonesi Workshop. The main building is 2500 m2, 33m high with a weight of nearly 1000tons, carries two 250 tons cranes. Other structures include a 17m high, 70m long, 330tons pipe rack, air intake supporting structures and other minor building.

Our role: structural design of steel structures and concrete foundations, supervising and coordination of CAD designers for the production of detail and shop drawings, analysis report, site supervision. We were contracted by CREW.



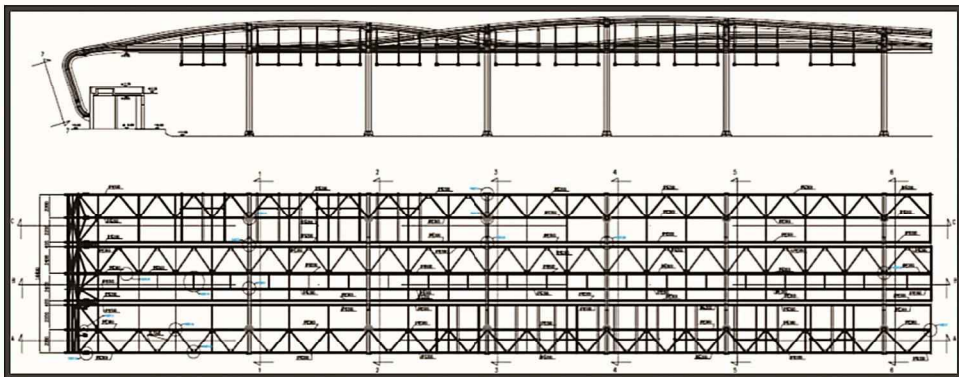


2009: Assistance during the production stage and calculations for the assembly stage for a footbridge over a main road in Milan (Viale de Gasperi) in cooperation with ARUP Italia srl and BCV Progetti srl.

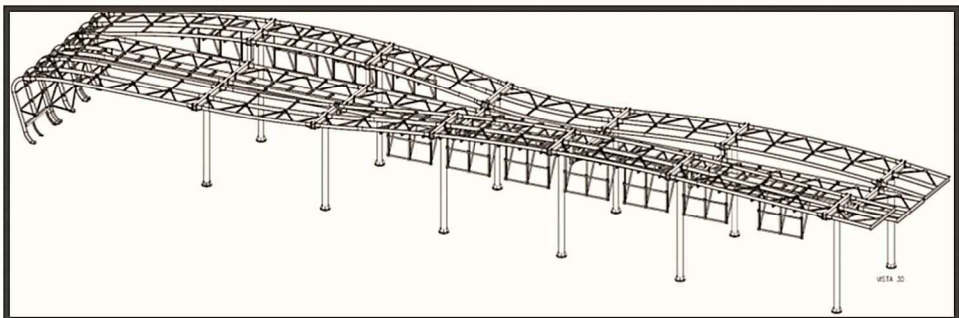


Our role: as I was the technical referent of the steel carpentry company, We were asked by ARUP to perform a check of their analysis of the footbridge; We produced the shop drawings and designed the assembly stages. We also performed site supervision both in the carpentry workshop and on construction site. All of this was in cooperation with ARUP's and BCV's engineers. We were contracted by the steel carpentry CARPENTERIE TRECCANI spa.





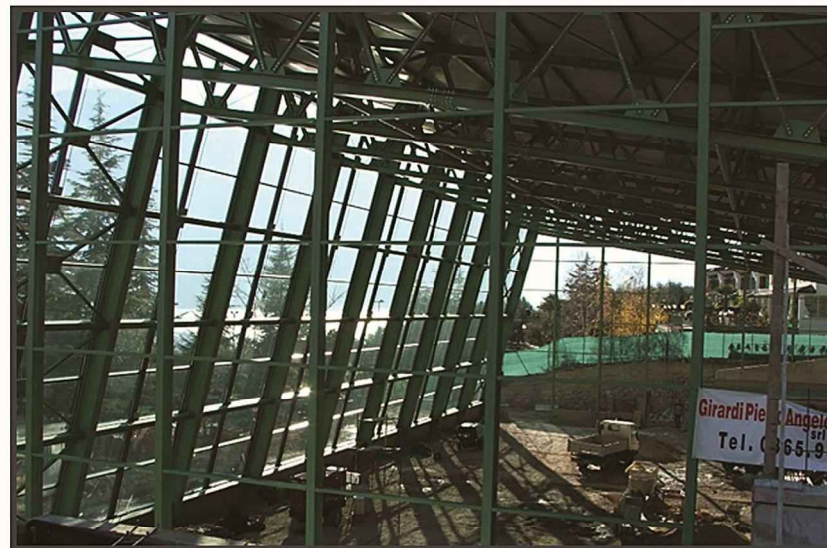
2010: Toll road barriers structures for **BREBEMI** motorway connecting Brescia, Bergamo and Milan with **CREW** Cremonesi Workshop.

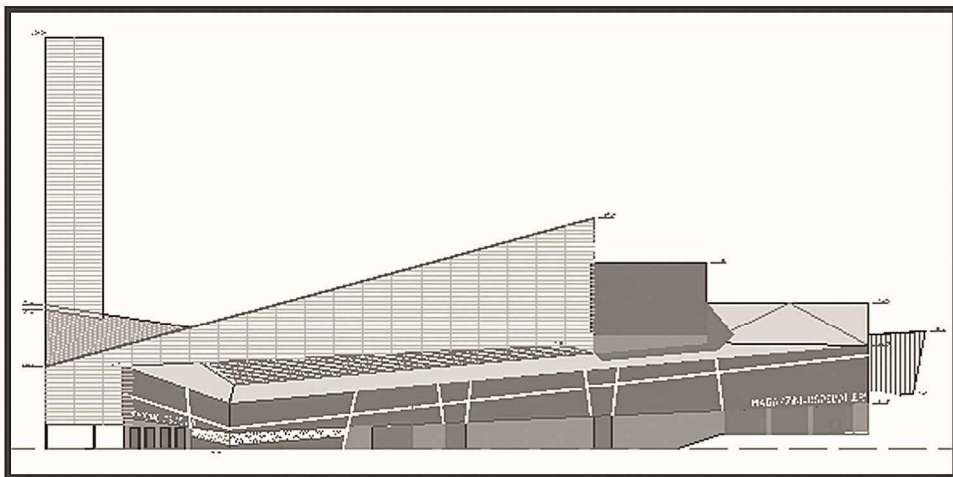


Our role: structural design of steel frame structures, production of detail drawings (with others), analysis report. We were contracted by **CREW**.

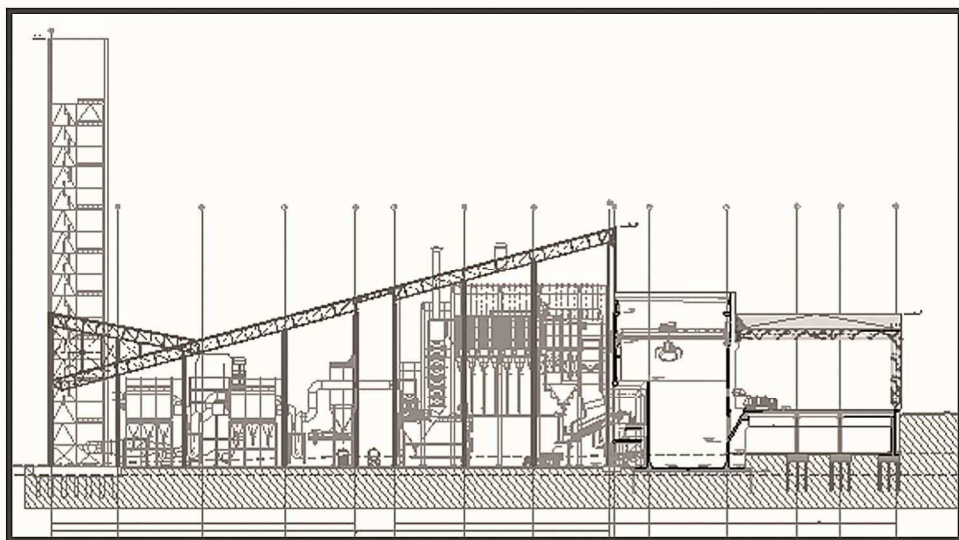


2000: Steel structure for Gimnasyum Limone del Garda, **Brescia**
Our role: We were commissioned by the municipality to produce the architectural and structural design of a public gym in front of the lake. The structure is an asymmetric frame pinned at the base to minimize the flexure transmitted to the foundations.

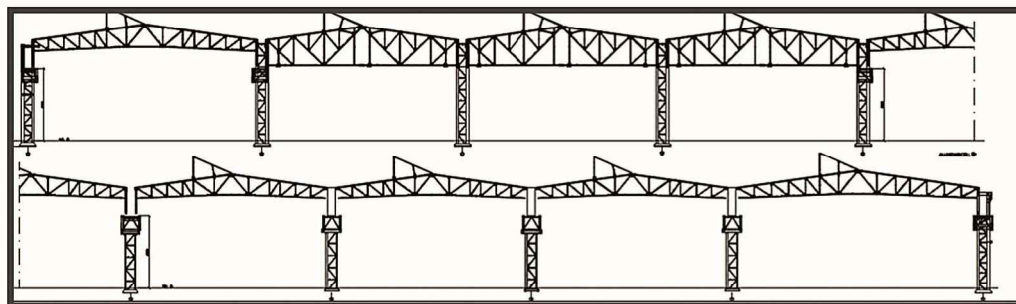


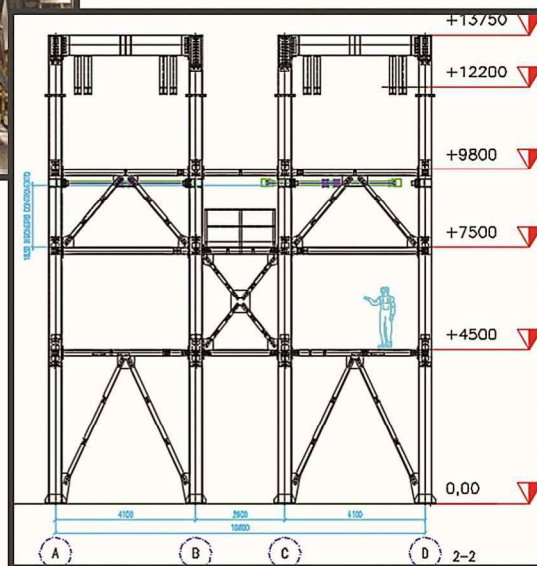
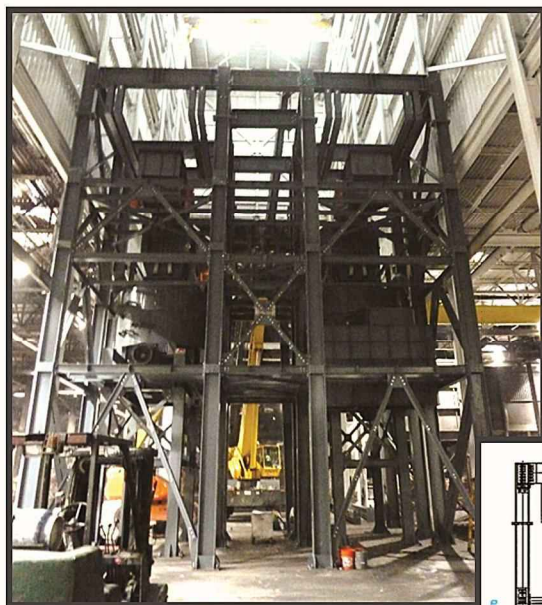


2011 Structural design of the new Waste to Energy power plant in Napoli, in progress with CREW Cremonesi Workshop, 2011



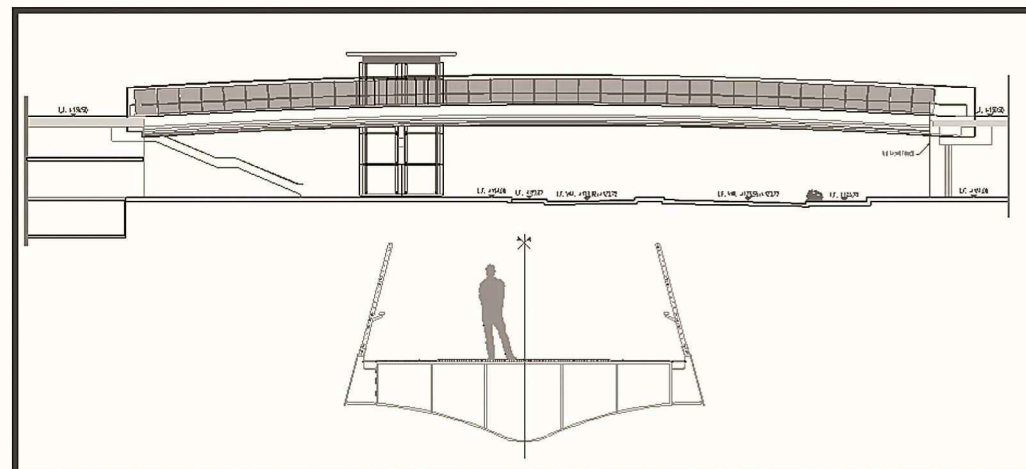
2009: 15.000 m2 and a weight of 1150tons shed for TRAFILERIE GNUTTI spa (bronze production plant) in Chiari, **Brescia**.
Our role: structural design of the building, production of shop drawings (with others), some supervision of construction site during assembly, liaise between TRAFILERIE GNUTTI and steel carpentry company. We were contracted by the steel carpentry CARPENTERIE TRECCANI spa.





2010-2011: Design and on site assistance for assembly of structures (frames supporting silos and a cooling house) in John Deere foundry plant in Waterloo , Iowa (USA) for SAVELLI spa.

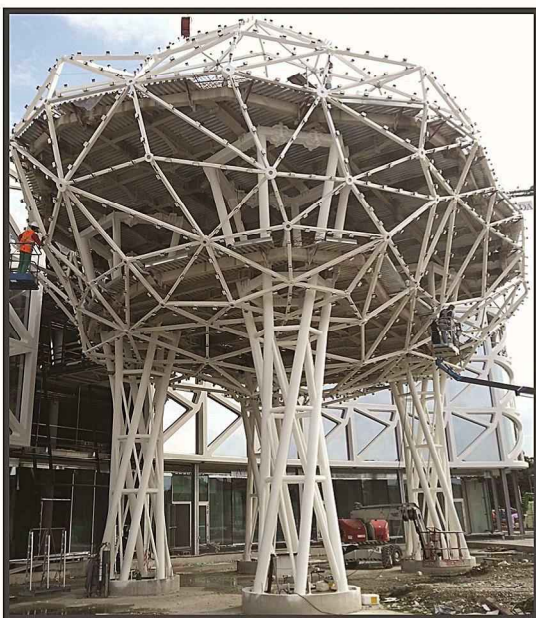
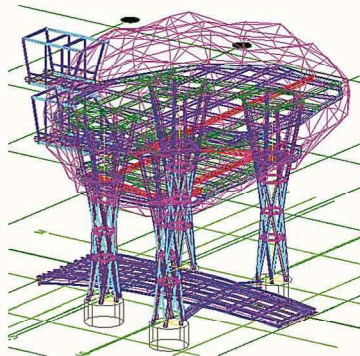
Our role: structural design of steel frame structures, production of shop drawings, liaison between the steel carpentry that produced the structures and SAVELLI and supervision on construction site during the assembly of the structures. We were contracted by SAVELLI spa



2010-2012: Design of a Footbridge and supporting structures in PORTA NUOVA VARESINE site in Milan in cooperation with ARUP Italia srl.

Our role: structural design of the supporting structures and the footbridge (which is a plated structural box section), design of assembly stages, production of detail drawings, analysis report, determination of the pre-camber shape of the footbridge. All of this has been performed in cooperation with ARUP's engineers. We were contracted by ARUP Italia.





2012: Steel building and walkway design for a new bank in Cividale del Friuli, Udine, Italy, commissioned by **NOVUM STRUCTURES GmbH**.
Our role: structural design of main frame of the structure, design of all joints, supervision to the production of shop drawings, liaison between the steel carpentry company that produced the main frame and NOVUM STRUCTURES, site supervision during the assembly of the structures.

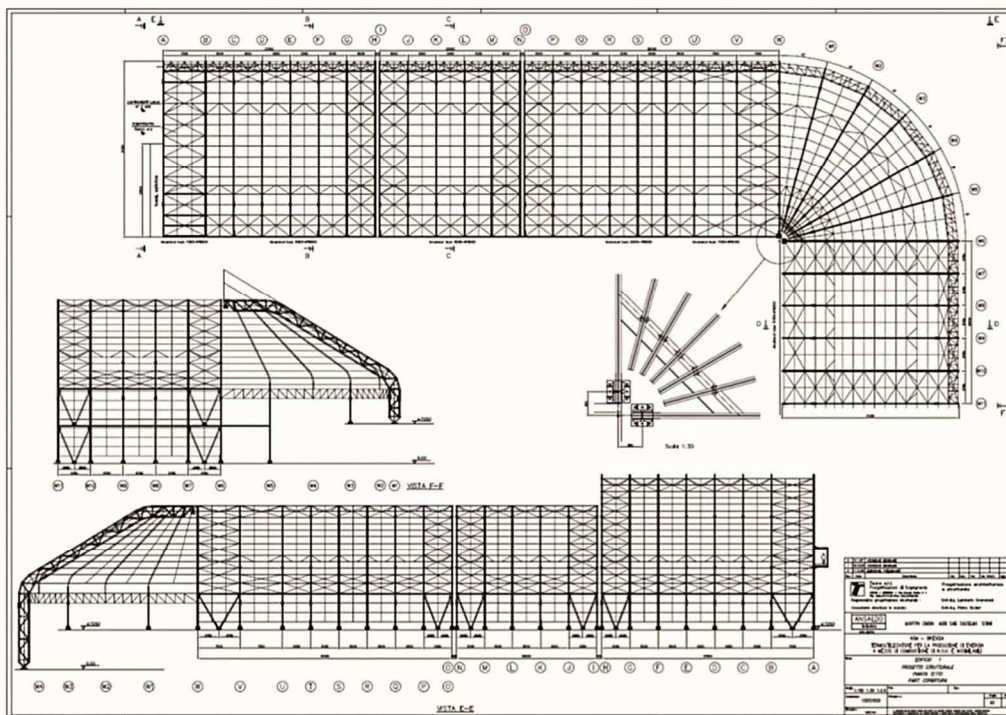


2007: Structures (footbridges, canopies, steel decks and stairs) for a shopping center in Ossona, Milan.
Our role: Complete structural design and production of shop drawings.





1997: Waste-to-Energy for solid urban waste steel structures, for A2A, BRESCIA
Our role: Complete design of all steel structures (canopies, pipe racks, machineries supports) including the 5500m² roof covering the area dedicated to the reception of the waste material.



2007-2008: Design of steel structures for a canopy made with 16,0 m cantilever truss for Centro Stampa Quotidiani in Brescia, Italy. We were contracted by CREW Cremonesi Workshop.





2005 Three industrial production buildings (48.000 m2 in total, about 2.000 tons) of PIRELLI TIRES, production plant in Slatina, Romania.

Our role: find the most economical solution for the realization of the roof and façade structures for the Pirelli tires facility in Romania; structural design of truss girders and purlins, façade structures, machineries supporting decks, production of shop drawing, analysis report, on site supervision during assembly, technical referent for steel carpentry company. We were contracted by the steel carpentry CARPENTERIE TRECCANI spa.



2005 Shopping center in COMO

Our role: design of a 30m long truss structure supporting a stone façade and the design of frame supporting a glass façade and roof.





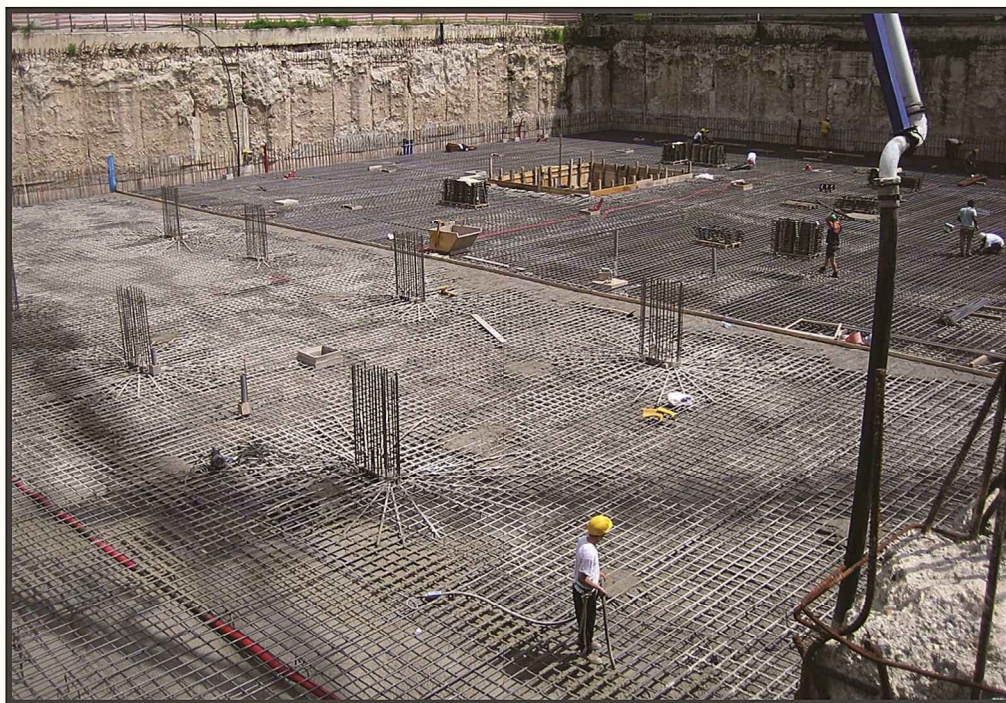
2009: Extension of an office building by creating two new floors over the existent structure. The structure consists in isolated mega columns fixed at the base supporting prefabricated slabs. Our role: design and production of shop drawing of the mega columns, liaise with architects and concrete structure engineers. Brescia, Italia.



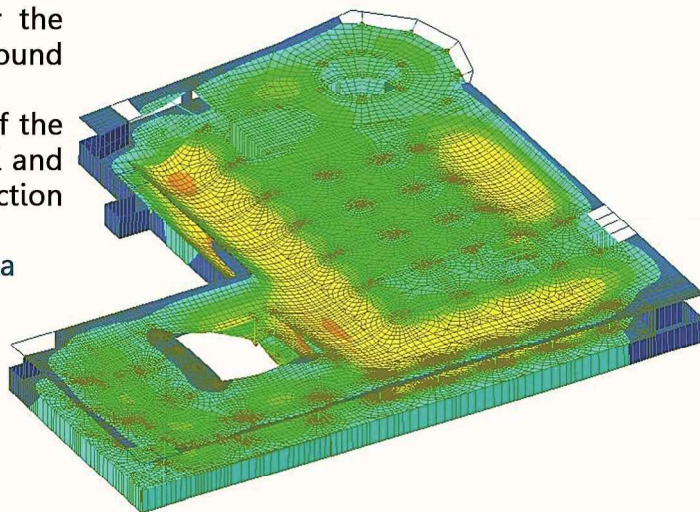
2006 Access ramp for PARKING BUILDING, Limone del Garda, Brescia, Carpenterie Ghedesi
Due to the high level seismicity of the construction site the structure was designed as an eccentric braced steel frame. The ramp is made with a concrete slab acting as a rigid diaphragm. Our role: design of the structure and production of shop drawings. Liaise with the steel carpentry and the foundations engineers.



2000: Structure for Ferrero (former Magic) feed mill plant. The structure is a 60m height braced frame steel structure. Our role: design of steel structure and foundations; production of shop drawing, liaise with steel carpentry, the owner of the plant. Sorbolo, Parma.

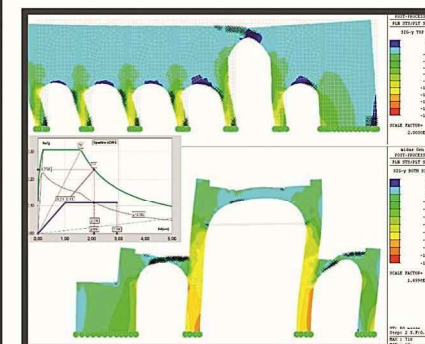
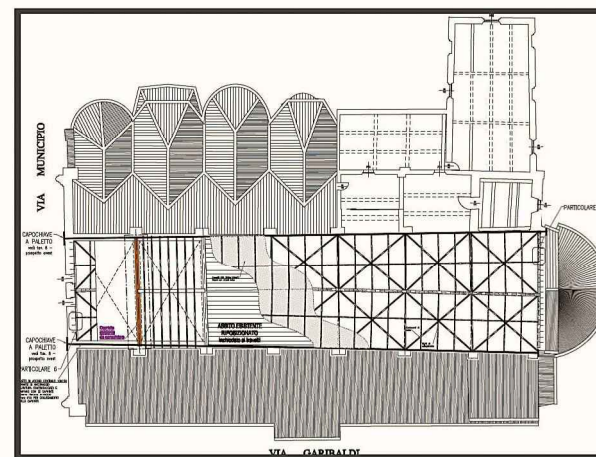
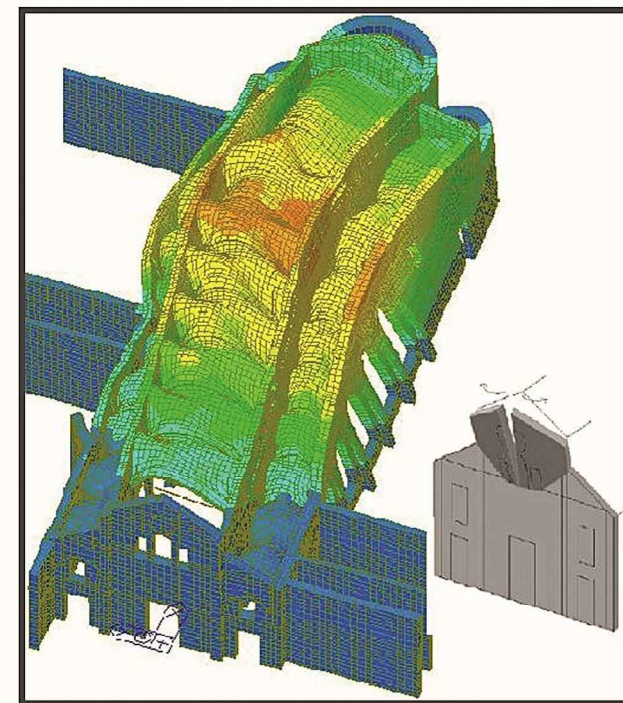


2010: Consultancies for the design of an underground parking in Cremona. Our role: optimization of the preliminary architectural and structural design, production of shop drawings. Piazza Marconi, Cremona



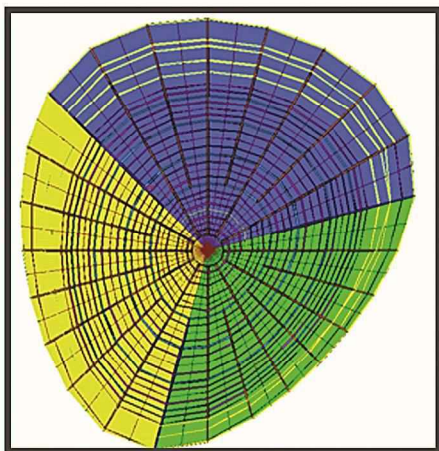
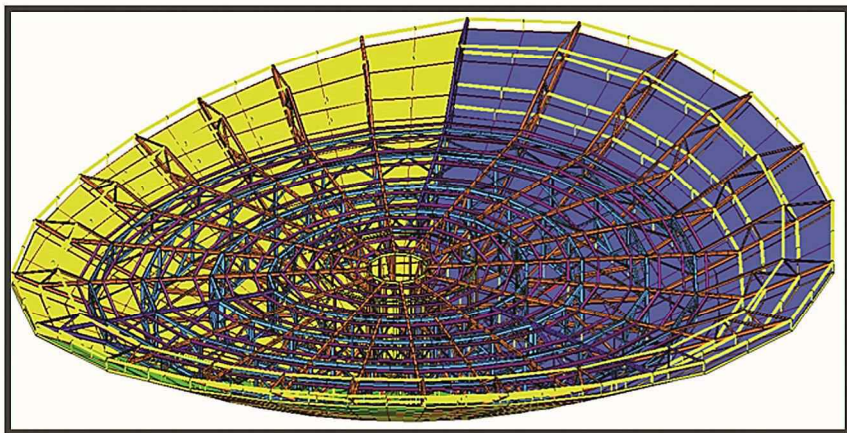
2008: Dynamic analysis of an historic church (San Lorenzo 1100dc) in Cremona and the design of the consolidation of the structure.

Our role: The structure is an historic church made with masonry walls and marble columns supporting a timber roof. We performed a dynamic analysis to better understand the structural behavior and we designed the reinforcement of the roof to better distribute the seismic actions to the walls. Cremona, Italy

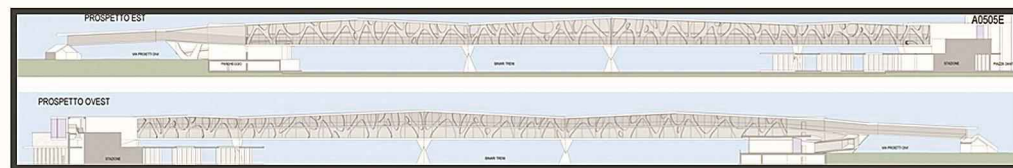
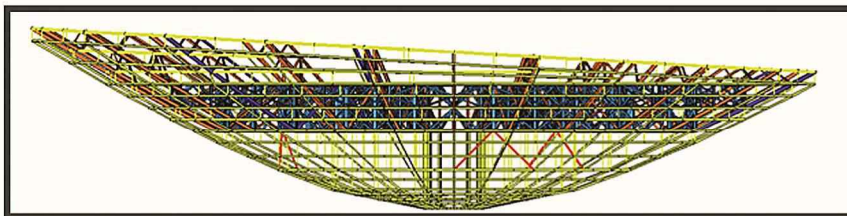


2012: Retrofit of San Bassiano Church, Pizzighettone, Italia

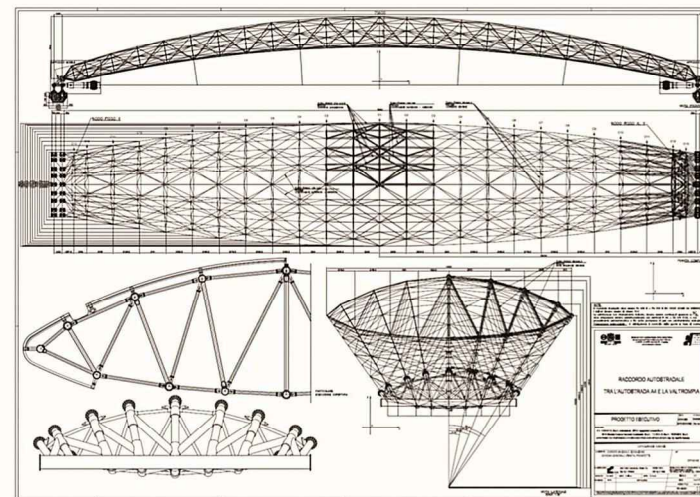
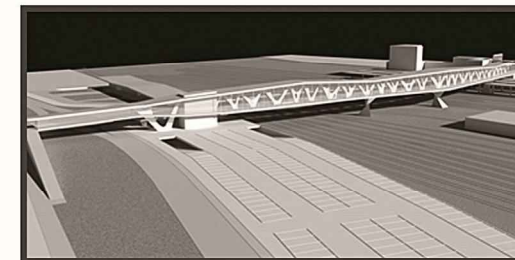
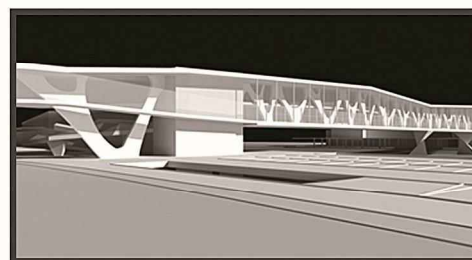
Our role: Push over analysis of the masonry structure to evaluate the seismic vulnerability of the church.



2014: Design of steel structures for the downtown station of line 3 of the new Riyadh metro network. We were contracted by CREW Cremonesi Workshop. Our role: for downtown station we performed a preliminary design of the stainless steel clad canopy covering the underground downtown station (preliminary architectural design by Snohetta). The structure is about 1000tons.

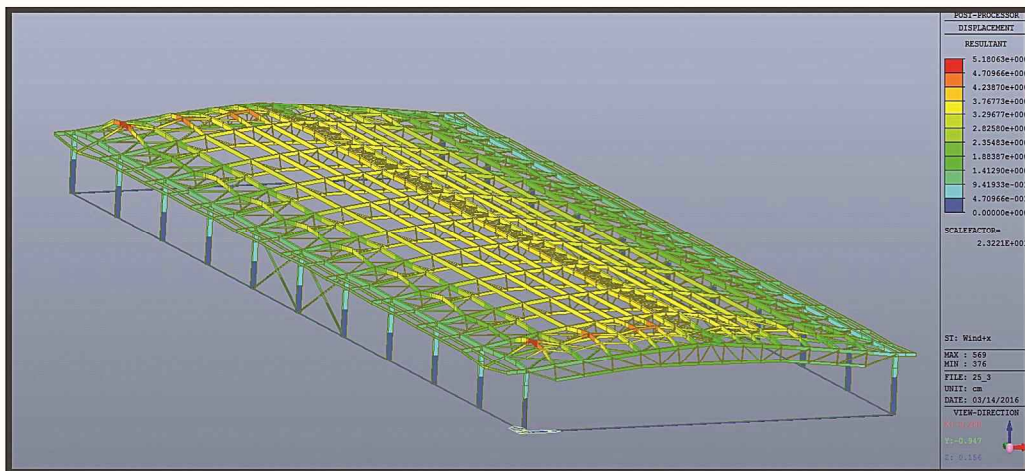


2010: Project for a new footbridge over railway
Project developed with Studio Mori e Frusca for a competition, Terni



2004: Toll road barrier structure for a new motorway connecting A4 with Val Trompia for SINA spa. The project consists in a 75m long arch with pinned support at both ends; the structural design was approved by the University of Brescia.

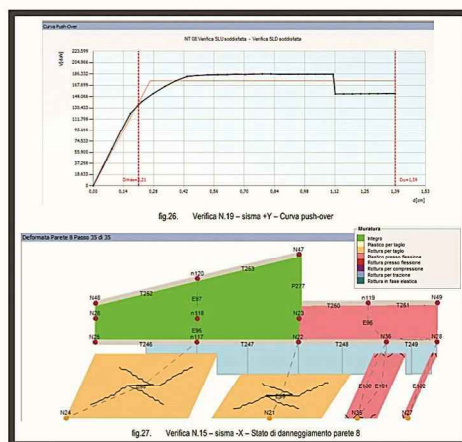
Our role: structural design of the steel spatial truss arch, production of detail drawings, analysis report.



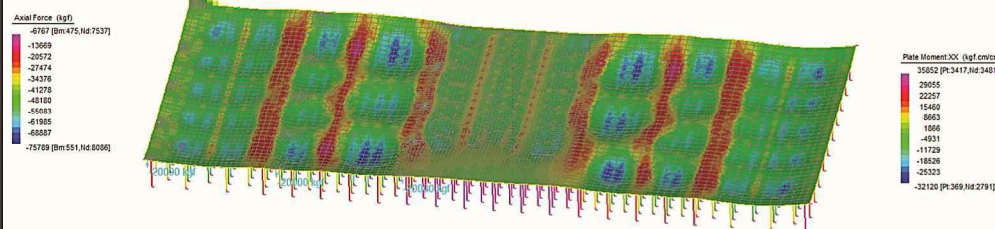
Midas Gen
Structural design of
120m lenght steel
building in Algeria

Stadata
3Muri

Seismic analysis of a
mansory school building
in Cremona

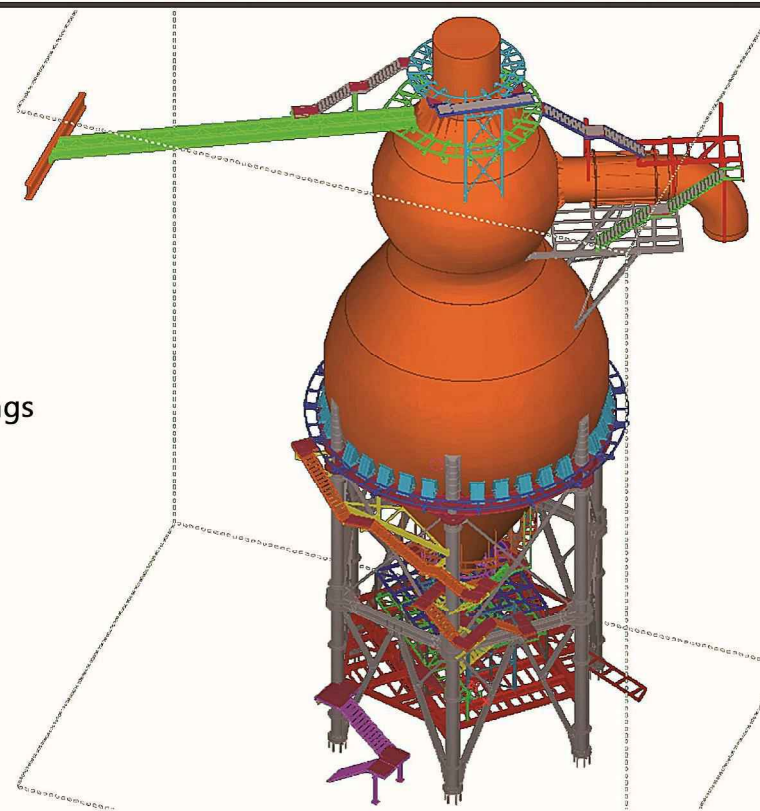


G+D Straus: Analysis of 70x25m foundation plates.



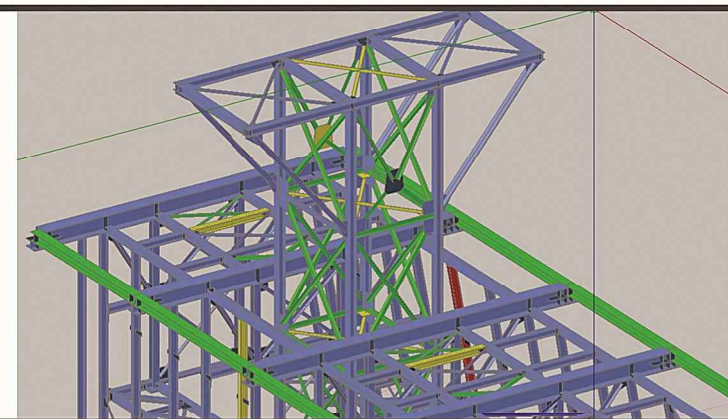
Trimble
Tekla

Structural design
and details drawings
for a 60 m height
Filter for AFO5 in
Taranto ILVA, Italy



Bentley
Prostructures

Design and details
forniture for a
Bio-ethanol
production building
Crescentino, Italy



2014-2015: Design of steel structures for the downtown station and western station of line 3 of the new Riyadh metro network. We were contracted by CREW Cremonesi Workshop. Our role: structural design of 1000tons steel structures for the stainless steel clad canopy covering the underground downtown station (preliminary architectural design by Snohetta), and 8000tons steel arch roof structures for western station and the adjacent market (preliminary architectural design by Omrania & Associates).

2014: Design of steel structures, concrete structures and foundations for new plancher for Arcelor Mittal steel mill (Complexe siderurgique de l'Hadjar – Annaba – Algiers). We were contracted by PAUL WURTH Italia spa. Our role: performing structural analysis, design and execution of detailed drawings of steel and concrete structures and foundations.

2013: Seismic retrofitting for various structure in ILVA Taranto spa steel mill, including the design of new "plancher" for blast furnace n°1, commissioned by SOMIN MONTAGGI INDUSTRIALI srl. Our role: performing structural analysis, design and execution of detailed drawings of steel structures and concrete slabs in cooperation with PAUL WURTH Italia spa.

2013: Consulting for structures in PORTA NUOVA VARESE site in Milan "Piazza Est – Piazza Attrezzata" for ARUP Italia srl. Our role: performing structural analysis of steel and composite steel concrete frames, to verify ARUP's results for strength and deformations. We were contracted by ARUP Italy.

2012: Steel building and walkway design for a new bank in Cividale del Friuli, Udine, Italy, commissioned by NOVUM STRUCTURES GmbH. Our role: structural design of main frame of the structure, design of all joints, supervision to the production of shop drawings, liaison between the steel carpentry company that produced the main frame and NOVUM STRUCTURES, site supervision during the assembly of the structures. We were contracted by the steel carpentry CARPENTERIE GHEDESI spa.

2012: Design of structures and silos for Regali do Brasil foundry plant in Mogi Mirim, Sao Paulo, Brasil for SAVELLI spa. Our role: structural design of steel frame structures and silos, production of shop drawings (with others), analysis report. We were contracted by SAVELLI.

2011: Preliminary structural design of new waste to energy power plant in Naples with CREW Cremonesi Workshop. Our role: supporting to architects during the conceptual design and performing of the preliminary dimensioning of the structure. We were contracted by CREW.

2011: Toll road barriers structures for the new East Ring Road (TEEM) in Milan with CREW Cremonesi Workshop. Our role: structural design of steel structures, production of detail drawings, analysis report. We were contracted by CREW.

2011: Design of structures and silos for Loiselet foundry plant in Nogent le Roi, France for SAVELLI spa. Our role: structural design of steel frame structures and silos, production of shop drawings. We were contracted by SAVELLI spa.

2010-2011: Design and on site assistance for assembly of structures (frames supporting silos and a cooling house) in John Deere foundry plant in Waterloo, Iowa (USA) for SAVELLI spa. Our role: structural design of steel frame structures, production of shop drawings, liaison between the steel carpentry that produced the structures and SAVELLI and supervision on construction site during the assembly of the structures. We were contracted by CARPENTERIE TRECCANI spa.

2010: Design of a footbridge and supporting structures in PORTA NUOVA VARESE site in Milan in cooperation with ARUP. Our role: structural design of the supporting structures and the footbridge (which is a plated structural box section), design of assembly stages, production of detail drawings, analysis report, determination of the pre-camber shape of the footbridge. All of this has been performed in cooperation with ARUP's engineers. We were contracted by ARUP.

2010: Toll road barriers structures for BREBEMI motorway connecting Brescia, Bergamo and Milan with CREW Cremonesi Workshop. Our role: structural design of steel frame structures, production of detail drawings (with others), analysis report. We were contracted by CREW.

2010: Steel structures for HOTEL GALLIA renovation in Milan for ARUP Italia srl. Our role: structural design of the steel structure frames for the entrance hall and some new portions of roof structure, production of detail drawings, analysis report, All of this has been performed in cooperation with ARUP engineers. We were contracted by ARUP Italy.

2010: Steel structures for a new entrance hall and the church in the "Poliambulanza" hospital. The job was commissioned by Mori e Frusca srl practice. Our role: structural design of steel frame structures, production of detail drawings, analysis report. We were contracted by Mori e Frusca.

2010: School Seismic vulnerability analysis in Ostiano CR. Our role: partner in structural design and analysis report.

2010: Underground parking in Cremona. Our role: partner in structural design and analysis report.

2009: School Seismic vulnerability analysis in Cremona. The job was commissioned by Comune di Cremona. Our role: partner in structural design and analysis report.

2009: 15.000 m² extension for TRAFILERIE GNUTTI spa (bronze production plant) in Chiari, Brescia. Our role: structural design of the building, production of shop drawings (with others), some supervision of construction site during assembly, liaison between TRAFILERIE GNUTTI and steel carpentry company. We were contracted by the steel carpentry CARPENTERIE TRECCANI spa.

2009: S. Lorenzo Church. Our role: partner in structural consolidation design and analysis report.

2009: Assistance during the production stage and calculations for the assembly stage for a footbridge over a main road in Milan (Viale de Gasperi) in cooperation with ARUP Italia srl and BCV progetti srl. Our role: as I was the technical referent of the steel carpentry company, We were asked by ARUP to perform a check of their analysis of the footbridge; We produced the shop drawings and designed the assembly stages. We also performed site supervision both in the carpentry workshop and on construction site. All of this has been performed in cooperation with ARUP's and BCV's engineers. We were contracted by the steel carpentry CARPENTERIE TRECCANI spa.

2008: Design of a new office building for DUFERDOFIN spa (4400), San Zeno Naviglio, Brescia. Our role: structural design of the building, production of shop drawings, supervision of construction site. We were contracted by the steel carpentry CARPENTERIE TRECCANI spa.

2008: Steel buildings and structures for two new ANSALDO ENERGIA power plants in San Severo, Puglia and Bayet, France, with CREW Cremonesi workshop. The main building is 2500 , 33m high, and carries two 250 tons cranes. Other structures include a 17m high, 70m long pipe rack, air intake supporting structures and other minor building. Our role: structural design of steel structures and concrete foundations, supervising and coordination of CAD designers for the production of detail and shop drawings, analysis report, site supervision. We were contracted by CREW.

2008: 3000 canopy for SEVEL spa (FIAT) plant in Atesa (CH). The structure consists in an inverted pendulum frame with 50m long truss girders. Our role: proposal for the realization of a 50 m long span canopy that met the owner's requirements, structural design of steel frame structure, production of shop drawings, analysis report. We were contracted by the steel carpentry CARPENTERIE TRECCANI spa.

2007-2008-2009: Steel structures for the IKEA stores in Brescia, Parma, San Giuliano Milanese, Villesse. Our role: structural design of various type of structures (such as decks, stairs, canopies, elevators frames), production of shop drawings, analysis report. We were contracted by various.

2007: Steel structures for three METROBUS stations (Brescia underground system), in Brescia commissioned by CREW Cremonesi Workshop. Our role: structural design of steel structures, production of detail drawings, analysis report. We were contracted by CREW Cremonesi Workshop.

2007: Design of foundations and structure for frames supporting electronic panels along the Milan ring road for SINA spa. Our role: structural design of steel structures and concrete foundations, production of detail and shop drawings, analysis report, some site supervision. We were contracted by SINA.

2007: Design of a 3300 steel deck and other roof and façade structures for "IL LEONE DI LONATO" shopping center, Lonato, Brescia. Our role: liaison between the steel carpentry company and architects, structural design of the building, production of shop drawings, supervision of construction site. We were contracted by the steel carpentry CARPENTERIE TRECCANI spa.

2006-2007-2008: Design and on site assistance for new steel structures and renovation for ACCIAIERIE VENETE (steel mills) spa at Sarezzo plant, Brescia. Our role: realization of the design of a moving wall system to separate different zones of an existing steel mill and many other renovation works; structural design, production of shop drawings, analysis report and site supervisions. We were contracted by the steel carpentry CARPENTERIE TRECCANI spa.

2005-2006: Steel buildings for ANSALDO ENERGIA power plants in Sparanise, Caserta and in Rizziconi, Reggio Calabria (an average of 1000 each). Our role: structural design of steel structures, production of detail drawings, analysis report. We were contracted by CREW.

2005: Assistance during the production stage and assembly of a steel carpentry footbridge over a main road in Milan, designed by BCV progetti srl. Our role: production of shop drawings under the supervision on BCV progetti, liaison between BCV progetti and steel carpentry company. We were contracted by CARPENTERIE TRECCANI spa.

2005: Plancher for a rolling mill (2500) for Qatar Steel Company in Qatar – work subcontracted by FERRETTI INTERNATIONAL spa. Our role: structural design of steel structures and concrete slabs, coordination of CAD draughtsman for the production of shop drawings, analysis report.. We were contracted by FERRETTI INTERNATIONAL.

2005: Three industrial production buildings (48.000 in total, about 2.000 tons) of PIRELLI TIRES production plant in Slatina, Romania. Our role: finding a more economical solution for the realization of the roof and façade structures for the Pirelli tires facility in Romania and after that, structural design of truss girders and purlins, façade structures, machineries supporting decks, supervising to the production of shop drawing, analysis report, on site supervision during assembly, technical referent for steel carpentry company. We were contracted by the steel carpentry CARPENTERIE TRECCANI spa.

2004: Production steel buildings for SEVEL spa (FIAT) plant in Atesa (CH). Our role: structural design of steel structures, production of shop drawings (with others), analysis report. We were contracted by CARPENTERIE GHEDESI spa.

2004: Toll road barrier structure for a new motorway connecting A4 with Val Trompia for SINA spa. The project consists in a 75m long arch with pinned support at both ends; the structural design was approved by the University of Brescia. Our role: structural design of the steel spatial truss arch, production of detail drawings, analysis report. We were contracted by CREW.

CONTACT

Viale Trento e Trieste, 112 Cremona Italy

Phone +39 0372 800357

Fax+39 0372 800358

studio@scolariprogettazioni.it

www.scolariprogettazioni.it
